

Computer Programs:

Hyundai provides below intelligent UPS monitoring software to help users monitor and manage the UPS even in an unattended environment. With the help of these programs, you obtain detailed information about the UPS and the main power system can be monitored and be configured at any time, on any computer:

UPSilon 2000

Hardware and System Requirements

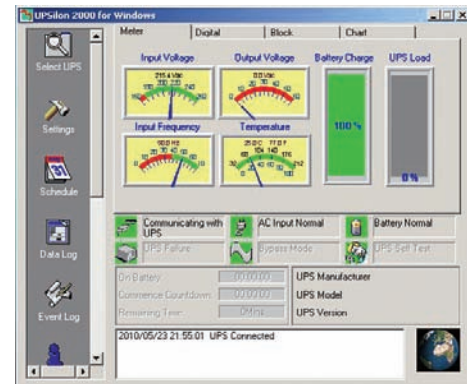
- At least 256MB RAM
- 233 MHz CPU or higher
- At least 200MB available hard disk space
- A minimum of 8-bit color depth (256 colors)
- Computer(s) with a RS232 communication port
- A minimum of 800 x 600 resolution (1024 x 768 recommended)
- Hyundai UPS Class C or D with package included RS232 cable and Upsilon 2000 software CD

Supported Operating Systems

- Linux
- Free BSD 4.X
- Novell Netware v3.1X \V4.X \V5.X
- MSWindows 95/98/Me/2000/XP/2003

Functions

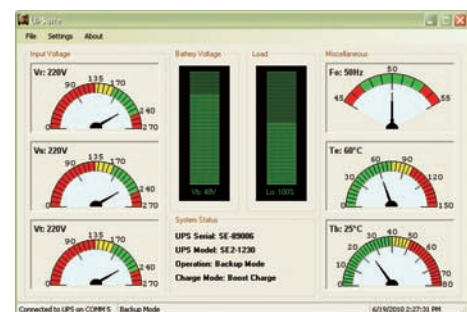
- Multi languages
- Record history data
- Backup time adjustable
- Start / Stop time adjustable
- Schedule on / off in a week
- Remote password adjustable
- Programmable UPS auto-test period
- Display the system shutdown countdown
- Auto send warning messages by e-mail / pager
- Auto detect AC power failure and UPS battery low
- Broadcast the warning messages to all workstations
- Auto shut down and turn off the UPS after AC power failed
- Countdown time and the interval of each warning adjustable
- Monitor and configure UPS remotely via TCP/IP or Internet (Password protected)
- Before shutting down the system, automatically close the applicable programs and save file
- UPS status reporting on server screen, including input / output voltage, load, frequency, temperature and so on
- Display the UPS status in drawing, such as the temperature, voltage, load, line frequency etc - Set UPS diagnostic and self testing time



UPSuite 2010

Hardware and System Requirements

- At least 256MB of RAM
- 233 MHz CPU or higher
- At least 100MB available hard disc space
- Computer with a RS232 communication port
- A minimum of 800x600 screen resolution (1024x768 recommended)
- Hyundai UPS Class E with package including RS232 cable and UPSuite 2010 installation disc.



Supported Operating Systems

- Windows 7; Windows Server 2008; Windows Server 2008 R2; Windows Vista, Windows Server 2003; Windows XP; Windows 2000

Supported Architectures

- X86
- X64

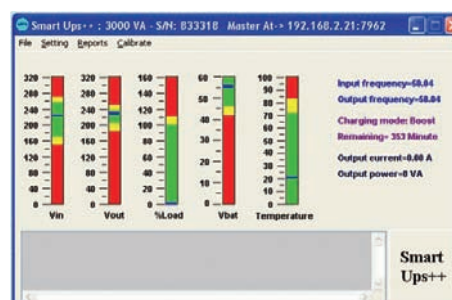
Functions

- Set the battery type
- Set the earth fault alarm
- Complete system logging
- Set the range of input voltage
- Set the synchronization tolerance
- Auto detecting AC power failure and return
- UPS status reporting on server screen, including the input/output voltage, load, frequency, temperature, battery voltage and charge mode

SMART UPS ++ (Master and Slave Programs)

Hardware and System Requirements

- At least 256MB RAM
- 233 MHz CPU or higher
- At least 100MB available hard disk space
- A minimum of 8-bit color depth (256 colors)
- Computer(s) with a RS232 communication port
- A minimum of 800 x 600 resolution (1024 x 768 recommended)
- Hyundai UPS Class B with package included RS232 cable and SMART UPS ++ software CD



Supported Operating Systems

- MSWindows95/98/Me/2000/XP/2003

Functions

- Record history data
- UPS auto-test capability
- Earth fault control capability
- Backup time calibration function
- Charging current setting capability
- Auto detects AC power failure and return
- Display the system shutdown countdown
- Synchronization tolerance setting capability
- Input voltage variation range setting capability
- Countdown time and effect of each warning settable
- Broadcast the warning messages to all the workstations
- Monitor and configure UPS remotely via TCP / IP or Internet
- Network computers shutdown preference setting to backup time increasing
- Auto shut down the system and turn-off the UPS after battery low or over heat
- Before system shutting down, automatically close the applicable programs and save files if possible
- UPS status reporting on server screen, including the input / output voltage, load, frequency, temperature, battery voltage, charge mode and relative backup time.